

[|Group JZG Oct 2005 Trip Report](#) | [| Rachel Album Oct08](#) | [| Rachel Album Oct09](#) | [| Comments Past Trip Members](#) | [| Pdf of this trip.](#)

16-26 Oct 2020 (11 days) Langmusi- Juizhaigou (EXCLUDED AIR FARE)

Rm4890 (per pax group of 12), Rm4860 (14 pax and above)

(Note : Based on Remimbi Yuan 1 = RM0.60. We will make final adjustment on the cost based on the Yuan exchange rate in Aug-Sep 2020)

Update 19 DEC 2019. Autumn is the super peak season for Jiuzhaigou and therefore please register asap to secure the flight seat. Since Air Asia launch flight to Lanzhou soon, we will fly in Lanzhou and out Chengdu now. Please register early to secure your seat. Email rachelheng123@gmail.com or Whatsapp 012 3520868 for registration.

[Air Asia Flight Schedule.\(Depart KLIA 2\)](#)

Depart

16 Oct 2020 FRI Kuala Lumpur (KLIA2) to Lanzhou (LHW) D7398 Depart 1720PM Arrive 2220PM

Return

26 Oct 2020 MON Chengdu (CTU) to Kuala Lumpur (KLIA2) D7321 Depart 1455 Arrive 1935PM

IMPORTANT NOTICE: This is meant to be a "free and easy" adventure trip. Participants should be relatively fit, with a good sense of humor, and above all, have the right attitude for close travel with others through possibly some trying times. Most definitely, this is not a trip for prudes, whiners, fuss-pots, and other similarly assorted types! We had a couple of those before and it wasn't pleasant for us or them. Although every effort will be made to stick to the given itinerary, ground conditions may change and cause some disruption and/or deviation from the norm. Otherwise, have fun.



Jiuzhaigou stunning View (3rd photo by Kit Chan)

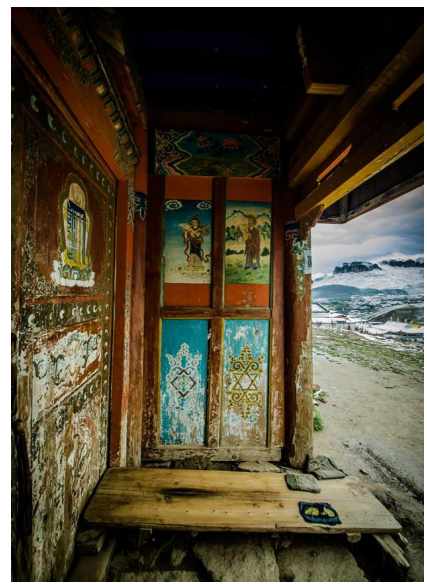
Jiuzhaigou, translated Nine Stockade Valley, is one of the top China destinations, especially in the super peak months of October. We also visit the equally popular Huanglong. We enter from the north, traveling along good roads that passes beautiful Tibetan villages and rolling hills. We overnight in Tibetan town/village of Xiahe, Langmusi and Ruergai. We spend a full day in Jiuzhaigou when gates open till gate closes, using the inner walking trails, away from the expected huge crowds. We "tapau" our lunch and spend as much time as possible, seeing as much as possible.

Day 1 KLIA 2: Assemble in KLIA 2 by afternoon **16 OCT 2020 FRI**. We will take flight D7398 at 1720pm. Reached Lanzhou at 2220PM. Check in Hotel. O/N Lanzhou.

Day 2 Lanzhou: Day tour in Lanzhou. Overnight (ON) Lanzhou.

Day 3 Lanzhou/Xiahe (260km 5hrs) We start the day early to enjoy the scenic drive to Xiahe on part of the Qinghai Plateau. This less-frequented route is dotted with quaint and pretty Muslim Hui and Tibetan farms and villages. The rolling high altitude grasslands with flocks of yaks and sheep are especially pretty. We will visit Labrang Tibetan Monastery that is reputed to be more Tibetan than Tibet itself. We'll have adequate time just walking around and taking in the atmosphere. ON Xiahe.

Day 4 Xiahe/Langmusi (230km 5hrs): On the drive to Langmusi, we visit the Milariba Buddhist Pavilion at Hezuo County. Langmusi is in the border of Gansu/Sichuan province. There are two tibetan monasteries, one is called Sezhi monastery in Sichuan Province and another one is called Geerdeng Monastery in Gansu Province. Local simply call them Sichuan Monastery and Gansu Monastery. Both are majestic temples with red walls and golden roofs built on the high slopes, overlooking hundreds of white-painted monks' houses. ON Langmusi.

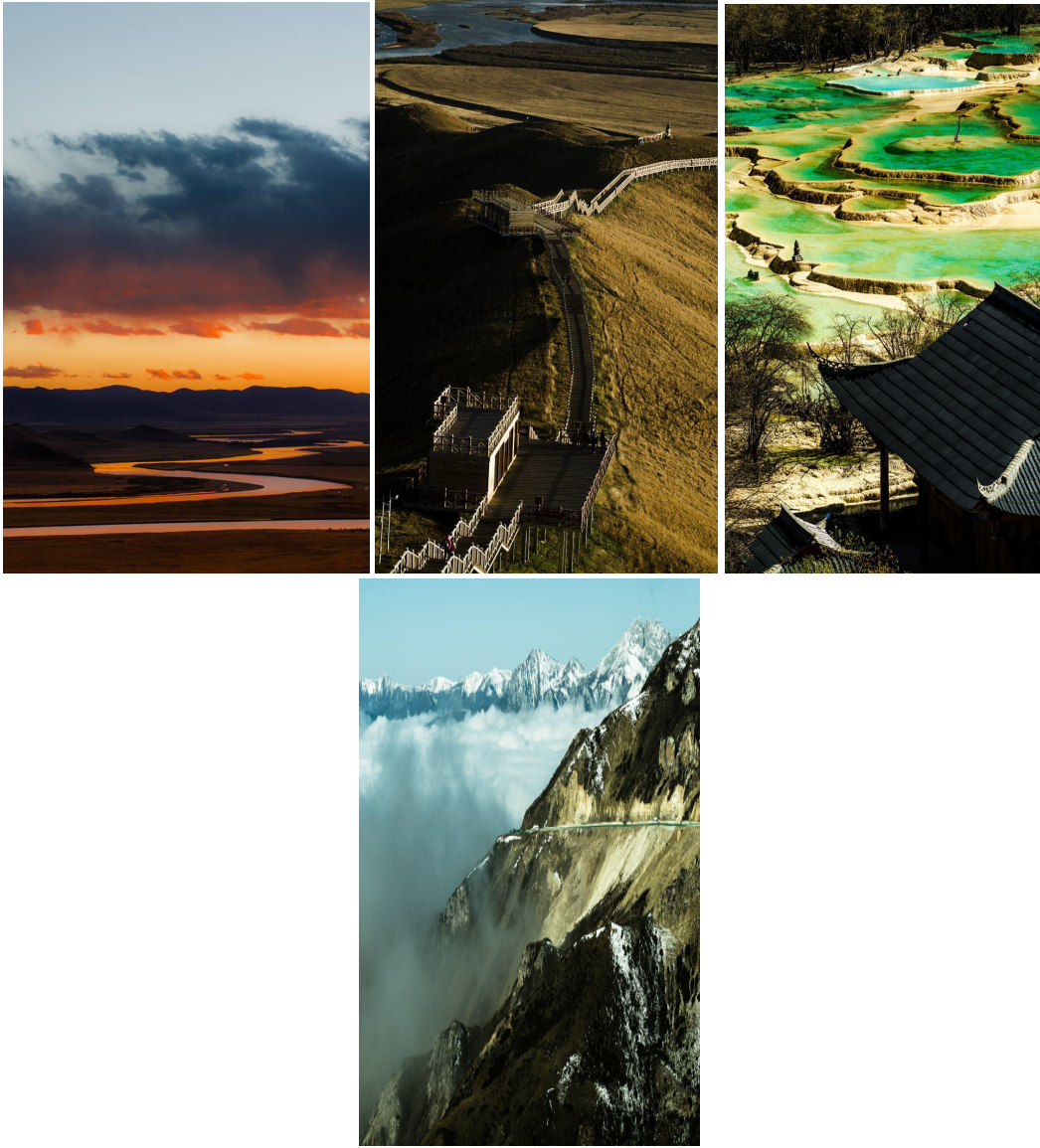


Langmusi (Photo by Kit Chan)

Day 5 Langmusi: We have a full day visiting the two Tibetan monasteries, and wander about the pretty villages. There are numerous trekking possibilities and we have the services of local Tibetans to take the group around this very untouristic area of Gansu. O/N Langmusi.

Day 6 Langmusi/Ruoergai (160km 6hr): After breakfast, we drive to visit the First Bend of the Yellow River. The 80 km road from Langmusi to this First Bend is in poor condition and takes about 3 hrs of hard driving. From here it is another 4 hrs to Zoige. ON Zoige (Ruoergai).

Day 7 Ruoergai/Songpan (192km 3hr): We drive to Songpan, we will pass the grassland where the Red Army walked through there for Long March, after lunch, we will visit the Ancient Songpan town and take a walk in the city. O/N Songpan



1st Bend of Huanghe river & Huanglong *(photo by Kit Chan)*

Day 8 Huanglong(100km 3hr): We bus 3hr to Huanglong, translated Yellow Dragon, another beautiful park studded with waterfalls and travertine ponds of blue, yellow, white and green. The top temple is 7.5 km from the entrance and has the most beautiful pools. Cable cars are available for visitors to get quickly to the top. ON Jiuzhaigou (Zhachang town)

Day 9 Jiuzhaigou : We have a full day to explore and appreciate one of China's most beautiful national parks. We visit the numerous lakes. The park is a huge area of gorgeous alpine valley studded with dazzling turquoise lakes and surrounded by snowy peaks. Shuttle bus services take visitors around but many choose to walk/trek along the walkways and paths running alongside the rivers. There are basically two routes covering Jiuzhaigou and we will do certain selective scenic spot. Overnight Jiuzhaigou.



Tibetan/Hui People along the journey (photo by Kit Chan)

Day 10 Back Chengdu : We bus to Chengdu after breakfast. It is a long drive taking approximately 6-7 hours. O/N Chengdu.

Day 11 Chengdu Fly Home : Take afternoon flight D7321 at 1455pm and reached KL 1935PM (26 Oct 2020)

TERMS AND CONDITIONS

1. Cost cover high speed train, accommodation and transport, breakfast except Langmusi, Songpan & Jiuzhaigou
2. Accommodations will be in 2-3 stars hotel.
3. Not covered are AA flight ticket KL-Lanzhou, Chengdu-Xian, visa fees (Rm104), meals (Rm50 x 10 days = Rm500) and entrance fees (approximately Rm600). Note that entrance fees are HIGH in China, some which are mentioned in the itinerary above.
4. Note we do not collect up front compulsory tips nor do we bring our groups for **"compulsory" shopping stops.** Members will decide the tips based on their satisfaction of the guide services.
5. Cost is subject to change depending on fluctuations in exchange rates and/or airfares.
6. A deposit of **Rm1100** will be payable to confirm your place.

Email rachelheng123@gmail.com or yongo123@gmail.com

Phone Rachel 012-352 0868

Phone Lee Min: 016-220 9033 or 603-40316225

Address No 19 Lrg Air Bersih Tiga, Air Panas, 53200 Kuala Lumpur